

CERTIFICATE OF LOCATION OF GOVERNMENT CORNER

East 1/4 of Section 24, Township 107N, Range 41W, 5th P.M.

STATE OF MINNESOTA, County of Murray

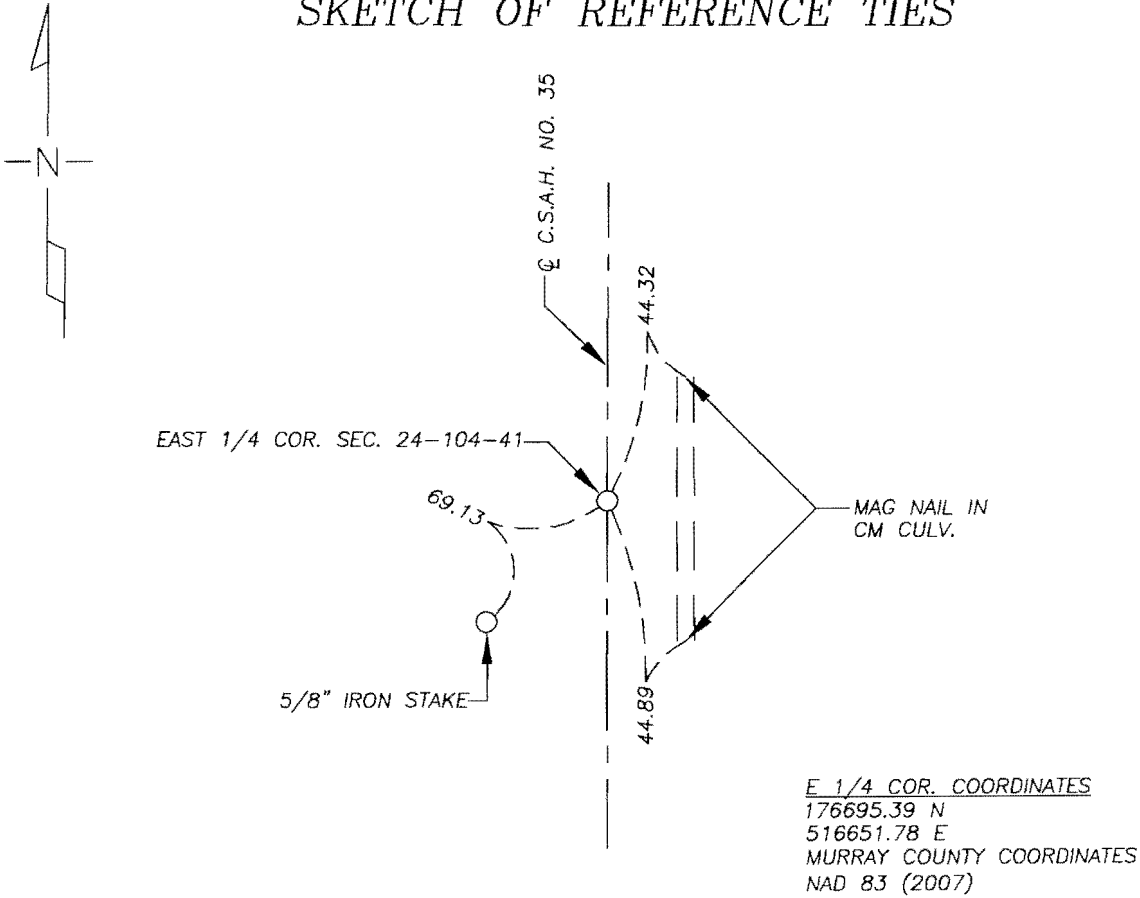
At the corner location shown on the sketch

On 10/6/08 found strong signal above iron stake

left monument as found lowered monument, removed monument (explain)

On 10/06/08 placed a survey marker spike with disc number 23008

SKETCH OF REFERENCE TIES



I hereby certify that this document and the data contained herein was prepared by me or under my direct supervision.

Larry L. Zieske 10-23-08
 SIGNATURE DATE

MN. LICENSE NO. 23008

- Land Surveyor, Professional Engineer
 County Surveyor, County Engineer

OFFICE OF THE COUNTY RECORDER

I hereby certify that this document was filed in the Co. Recorder's Office at _____ on the

_____ day of OCT 28 2008

County Recorder James V. Johnson
 By _____, Deputy

DOCUMENT NO. _____

Statement of Evidence

Original Township Plat indicated Township lines were surveyed by J.W. Myers with date of contract of June 22nd 1861 and subdivision was surveyed by G.M. Fletcher with date of contract of July 11 1861.

Murray County Highway Department records indicate an iron pin was placed in 1969 and found again in 1989. In 1994 they removed iron pin and dug a 2' X 4' X 4' deep hole and also probed and found nothing, they then replaced iron pin.

On 10/6/08 we found a strong signal that fit County ties reasonably well. We placed survey marker spike with disc number 23008 and established new ties.



Perry L. Zieske
10-23-08